

The iLight News



Nov./Dec.
2006

The 2006 “Best of” Edition: A Year in Review

Clean lines, saturated color, and various application possibilities are just a few features setting Plexineon apart from competitors' products. But why take our word for it? This edition of the *iLight News* contains the best applications photos of 2006. See for yourself why our products really are considered “Best in Class!”

Best Trim



Best Interior



Best Hospitality

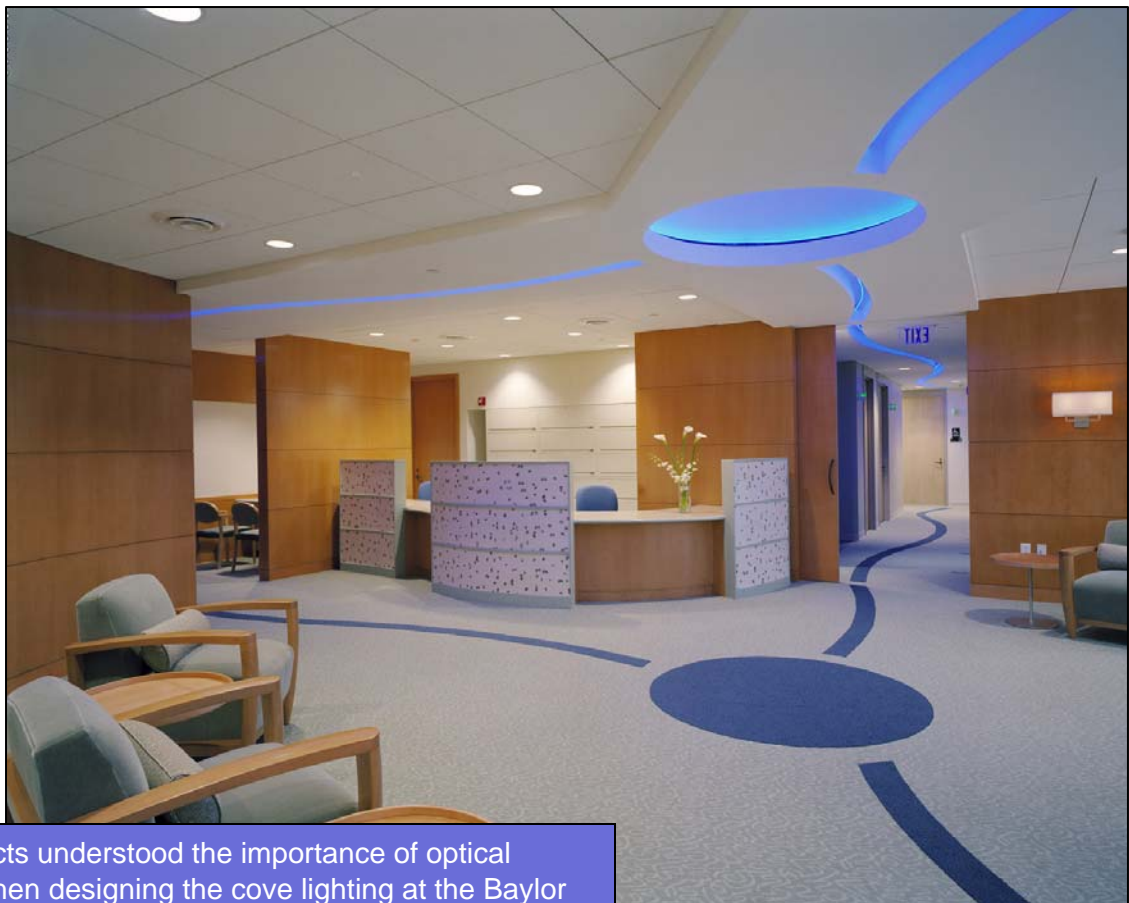


The iLight News



Nov./Dec.
2006

Best Interior Application: Baylor Hospital



FKP Architects understood the importance of optical symmetry when designing the cove lighting at the Baylor Hospital Maxine Messenger Clinic, the best interior application of 2006. This photo demonstrates the artistic applications possible using Plexineon in a nontraditional manner. Plexineon lighting was bent to mirror the pattern on the carpet and adds another dimension to the décor. The possibilities are endless when you consider the award-winning features associated with Plexineon.

Plexineon Colors: Blue

Linear Feet: 120

Power Supplies: 4

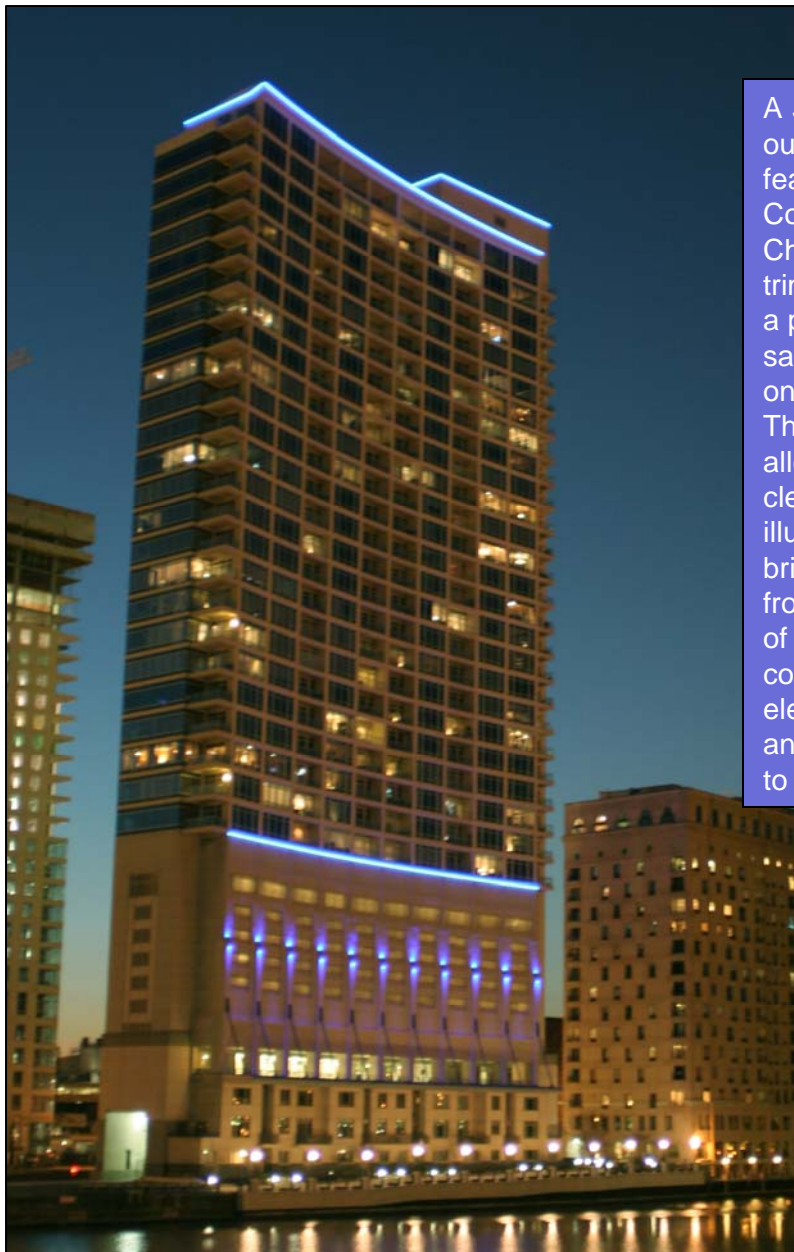
Rep: LESCO Architectural Lighting

Designer: FKP Architects

Photo Credit: LESCO Architectural Lighting



Best Architectural Trim Application: Riverbend Condos



A *single* strip of Blue Plexineon outlines the architectural features of the Riverbend Condominiums in downtown Chicago, the most striking 2006 trim photograph. This picture is a perfect example of the saturation of color emitted from only one piece of Plexineon. The slimness of the product allows for easy installation and a clean finish, but the power of the illuminated LEDs creates a brilliant light that can be seen from miles away. The blue hue of the Plexineon gives the condos a state-of-the-art feel, elevating it from being just another building along the river to a striking visual facade.

Plexineon Colors: Blue

Linear Feet: 900+

Power Supplies: 30

Rep: Technilight of Chicago, IL

Designer: Mitchell B. Kohn Architectural Lighting Consultants

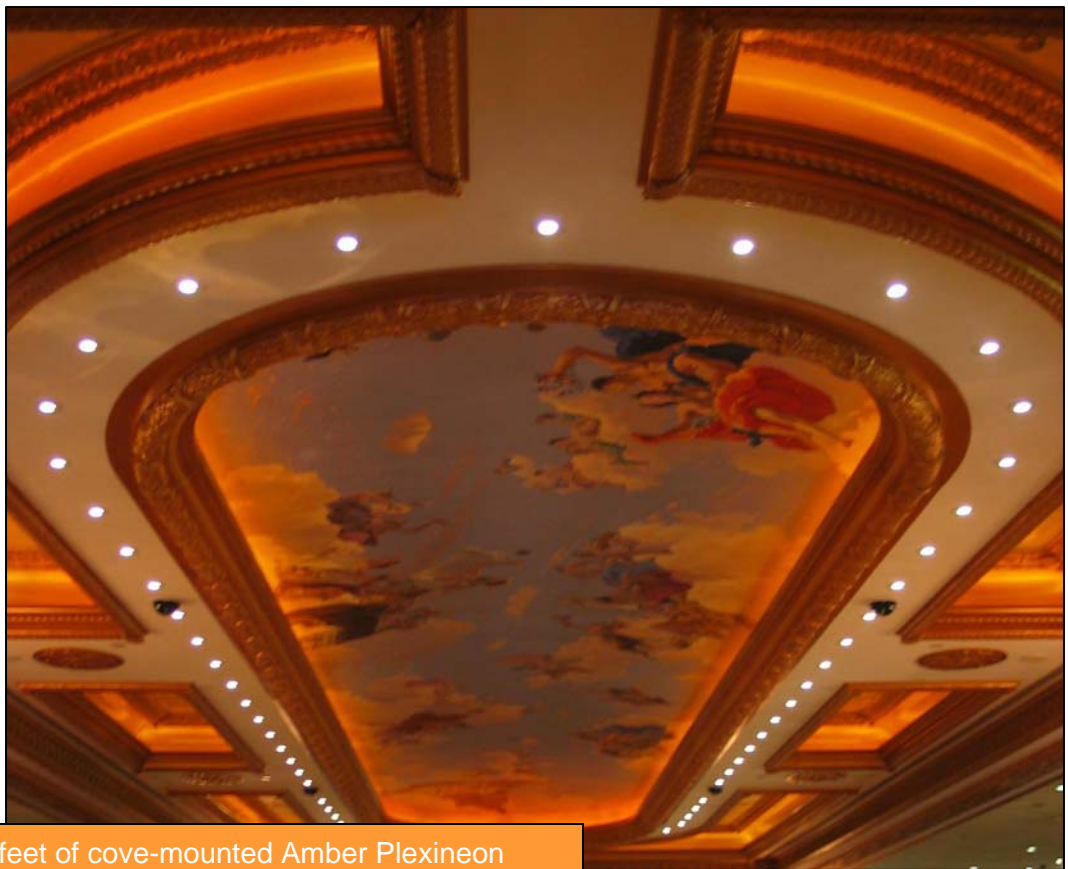
Photo Credit: Horizon Photography

The iLight News



Nov./Dec.
2006

Best Hospitality Application: Caesar's Casino



Over seven-hundred feet of cove-mounted Amber Plexineon illuminate Caesar's Casino in Atlantic City, creating the most dynamic interior environment in a hospitality setting photographed this year. The richness of the hue accents the coves, drawing attention to the fresco artwork and architectural curves of the ceiling. Penn Lighting worked with architects and interior designers to craft an overall atmosphere where patrons would love to linger, spending more time (and money) in the casino. Amber tones promote feelings of comfort and warmth, the finishing touch to the ambience of the room.

Plexineon Colors: Amber

Linear Feet: 700+

Power Supplies: 19

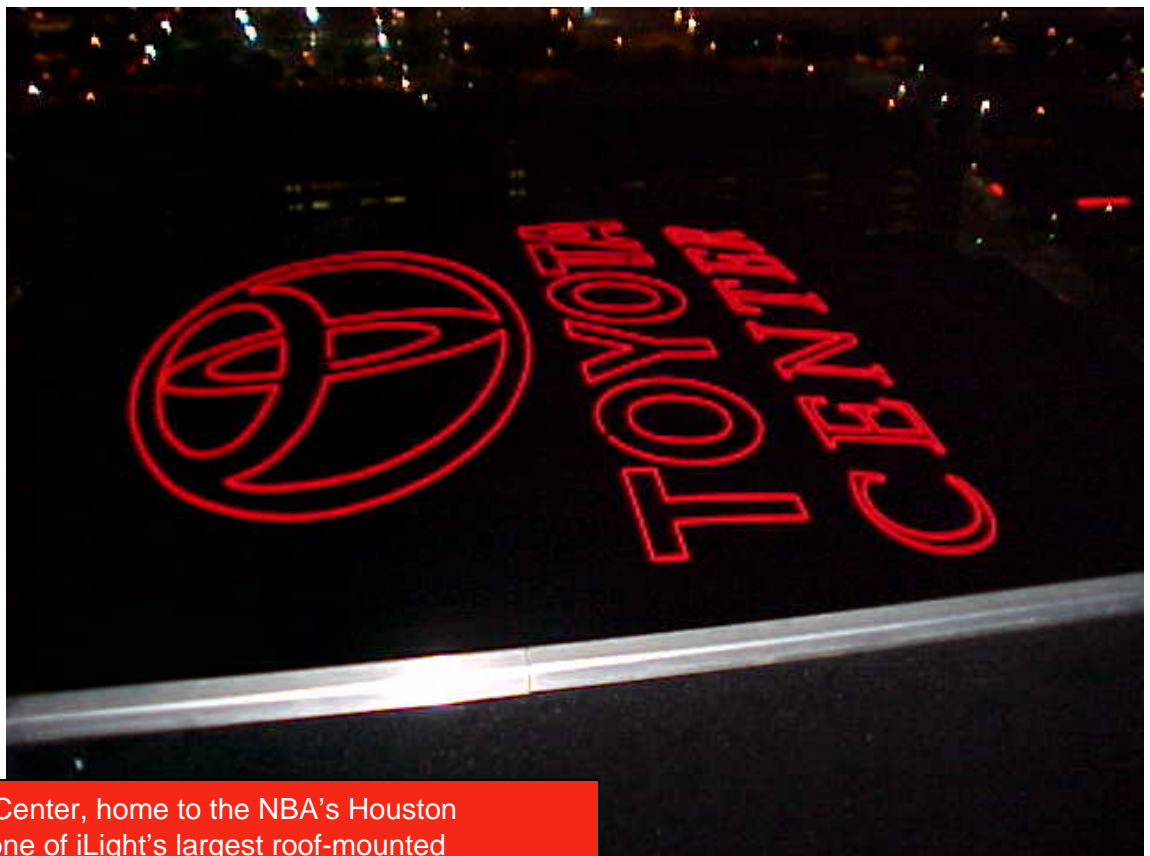
Rep: Penn Lighting

The iLight News



Nov./Dec.
2006

Best Sports Arena Application: Toyota Center



The Toyota Center, home to the NBA's Houston Rockets, is one of iLight's largest roof-mounted installations and this year's best sporting application. Visible to blimps, helicopters and other low-flying aircraft, the 15-foot letters and 45-foot logo emit a bright red glow, setting this famous entertainment forum apart from neighboring skyscrapers. Plexineon's durable construction, low voltage and bright, even-toned color make it the perfect solution needed to withstand exposure to the harsh Texas climate.

Plexineon Colors: Red

Linear Feet: 4000+

Power Supplies: 75

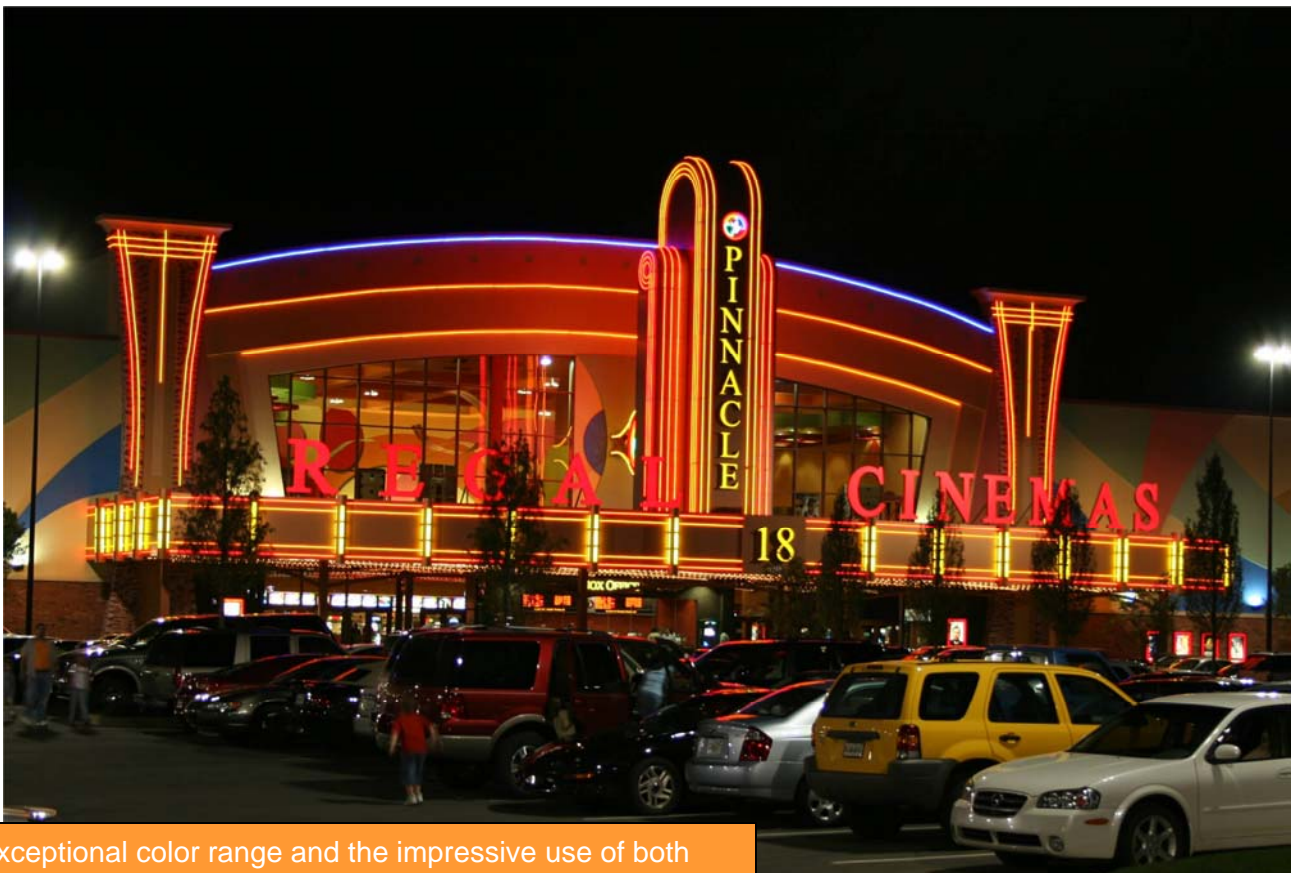
Rep: LESCO

Designer: BOS Lighting Design

Photo Credit: BOS Lighting Design



Best Entertainment Venue Application: Regal Cinemas



Exceptional color range and the impressive use of both curved and straight Plexineon pieces set the Pinnacle 18 Theater of Regal Cinemas apart from other exterior applications. iLight's entire color spectrum, including seven vibrant colors, was used by TK Architects to create the lively, energetic entryway. Over 5,000 feet of Plexineon illuminate the theater from the inside – out. The bright, vivacious colors capture the energy and overall experience of a night out on the town.

Plexineon Colors: Red, Amber, Orange, Teal, Magenta, Green, and Blue

Linear Feet: 5,000+

Power Supplies: 183

Specifier: TK Architects

Installer: East Coast Sign

The iLight News cont.



Nov./Dec.
2006

2006 Awards and Recognition

May



At the Lightfair International 2006 trade show, two of iLight's newest products were featured in the New Product Showcase. The two products recognized, Plexineon White 2X and RGB, are scheduled to launch in early 2007. This showcase highlights innovative lighting products showing promise in today's competitive and demanding market.

For complete details of the New Product Showcase, visit <http://www.ilight-tech.com/news.htm> and click on the May/June newsletter link.

September



Inc. The Handbook of the
American Entrepreneur

iLight Technologies ranked #84 on *Inc.* Magazine's list of the top 500 fastest growing companies in the country. Of the 500 companies recognized, iLight was one of only 12 manufacturing companies to be listed.

For the press release describing this award visit <http://www.ilight-tech.com/news.htm> and click on the Inc. 500 link.

September

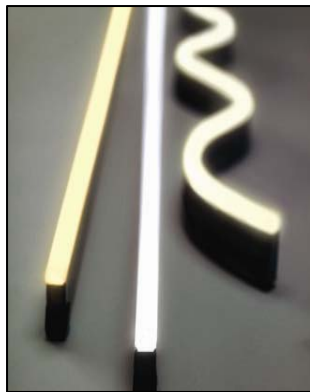


iLight's Plexineon products were named the "Professional's Choice" in the September 2006 edition of Building Design + Construction Magazine. This article features products frequently used by readers as a means to share industry insights and exceptional products.

For more information on the "Professional's Choice" article, visit <http://www.ilight-tech.com/news.htm> and click on the September/October newsletter link.



Product Launch Updates



Plexineon White 2X Series

- **Plexineon White 2X Series (3500°K, 4500°K, 6500°K):
End of Q1 2007**

The complete line of the new, brighter-white LED products from iLight Technologies is scheduled to launch in early 2007. The Plexineon White 2X product family will be offered in three color temperatures-all producing high efficiency white light, stable and consistent color temperature and longer lifetimes associated with blue LEDs. Ideal applications for White 2X include, but are not limited to, interior and exterior trim, accent and cove lighting.



Plexineon RGB Series

- **Plexineon RGB Series: End Q2 2007**

iLight will introduce its new color changing Plexineon RGB product mid-year 2007. The slim linear LED fixture will have over 16 million color combination possibilities. Plexineon RGB offers a smooth, even light output over the entire length of the product and is intended for interior and exterior trim, accent or cove lighting applications.

Technical sheets for both White 2X and RGB are currently available by logging onto our Web site:

www.ilight-tech.com/products.

Contact Us:

To be added or removed from this newsletter, contact: Natalie Hanley, Marketing Assistant
nhanley@ilight-tech.com

For all other Marketing or Sales inquiries contact:
Elizabeth Randgaard, Director of Marketing
erandgaard@ilight-tech.com