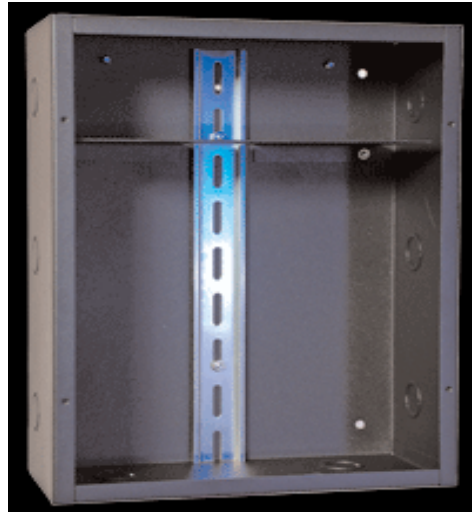


Installation - eDIN Enclosure

Pathway Connectivity eDIN Enclosure



- Sturdy steel construction
- Conduit knockouts on all sides
- Easy wiring
- Internal DIN rail for mounting eDIN
- Modules Can be pre-installed
- Black powder coat finish
- Barrired high-voltage section for power supply
- CAD dwg on Web site

Pathway eDIN Enclosures are a great way to install your eDIN modules. Available in two sizes, eDIN enclosures can accommodate several modules and a power supply.

Model Description

1105 eDIN Small enclosure (1 qty. 4-way splitter and 1 qty. eDin dimmer with 2 power supplies)

1106 eDIN Large Enclosures (3 qty. 4-way splitters and 2 qty. eDin dimmers with 4 power supplies)

Specifications

Size: Small: 10.25" x 13.25" (260mm x 335mm)
Large: 10.25" x 23.25" (509mm x 335mm)

Depth: 4.5" (120mm)

Rail Space: Small: 9.5" (240mm)
Large: 19.5" (495mm)

Mounting: Internal 35mm x 7.5mm DIN rail (included)

Power Supply: eDIN 1001 or equivalent (not included)

ORDERING INFORMATION

Ordering Number: 80-DNE01-001-00 eDIN Enclosure small
80-DNE02-001-00 eDIN Enclosure large

Applications

- Mount opto-splitters, mergers and dimmers

Specification sheets are subject to change without notice. For the most recent version, please refer to www.ilight-tech.com.

Product Application

Plexineon & Hypnotica iS